

BCCO Training for Architects/Engineers

OCPS

2021



**Orange County
Public Schools**

Purpose



The objective of this session is to assist the Architectural and Engineering firms who provide design services for the district with the submittal of construction design documents and having them approved upon the first submission.

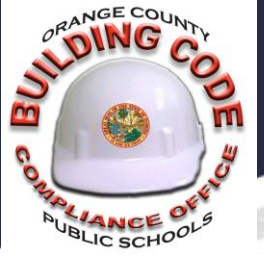
#1 Reason For Rejection



- Accessibility requirements as they relate to plumbing (Advisory vs required) Advisory dimensions for specific age groups shall be followed if used



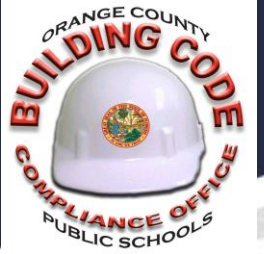
#2 Reason For Rejection



- Incorrect codes or code additions referenced



Accessibility Requirements



- Grab bar placement in relation to water closet flush valves

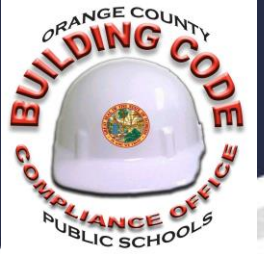
FAC 604.5.2 Exception 2

Accessibility Requirements



- Ambulatory stalls not shown, incorrect door swings, incorrect dimensions...

Accessibility Requirements



- Incorrect spout placement, (in relation to countertop) and wheelchair approach to drinking fountains

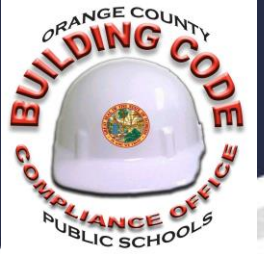
Accessibility Requirements



- Wheelchair approach to doors w/closers and latches



Signage Requirements



- Signs should not be installed outside of locked doors indicating the placement of a fire extinguisher within.
- All-code required signage at double doors should be placed on the hinge-side of the secondary (typically the stationary) door.



Code Requirements



- No fencing shown to separate mechanical, electrical or plumbing equipment at ground level from students as required by 453.10.1.1.1 of Florida Building Code (Formerly 423.10.1.1)

Code Requirements

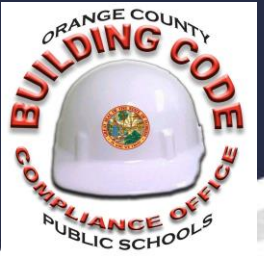


Passenger loading/unloading zones

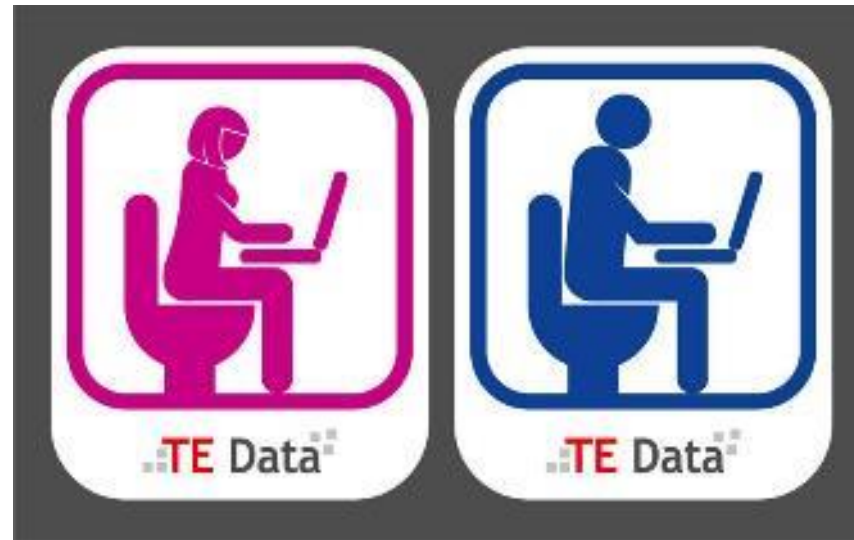
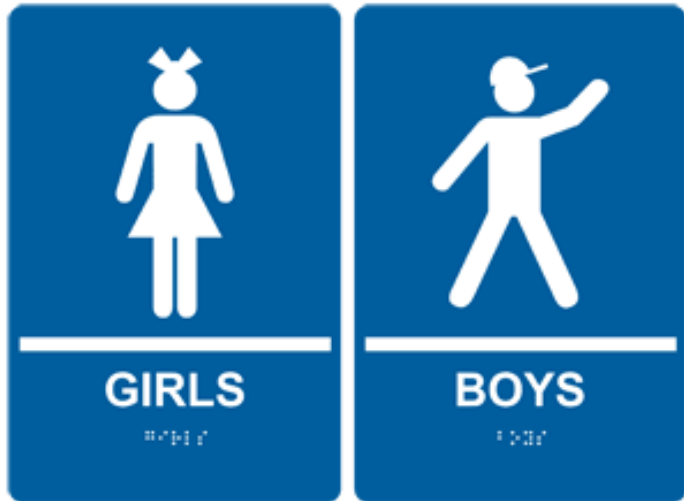
- Insufficient number shown
- Shall not overlap the vehicular way
- Access aisle shall be marked as to discourage parking in them.
- Changes in level are not permitted.



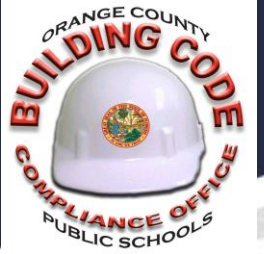
#3 Reason For Rejection



- Gender not shown for toilet rooms



#4 Reason For Rejection

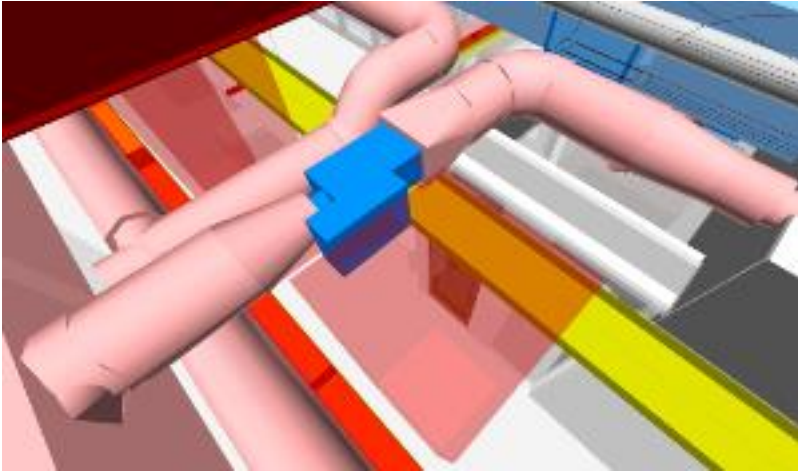


- Sanitary and storm sewer piping is shown with a slope less than the minimum allowed by code

#5 Reason For Rejection

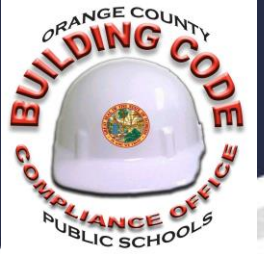


- VAV Clearance must be identified and observed.



NEC 110.26

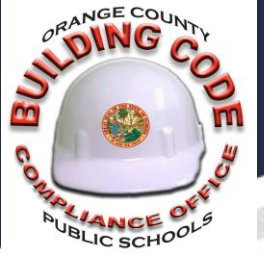
Significant Changes



- Requirement for providing tempered water for all lavatories and group wash fixtures in public use restrooms (2020 FBC(P) 419.5)
- (Min 85°F - Max 110°F degrees)



Significant Changes



- Definition of “public spaces” in Chapter 2, Section 202, of the 7th Edition of the Florida Plumbing Code includes “schools”
- Section 607.1 requires tempered water to be supplied for bathing and washing purposes

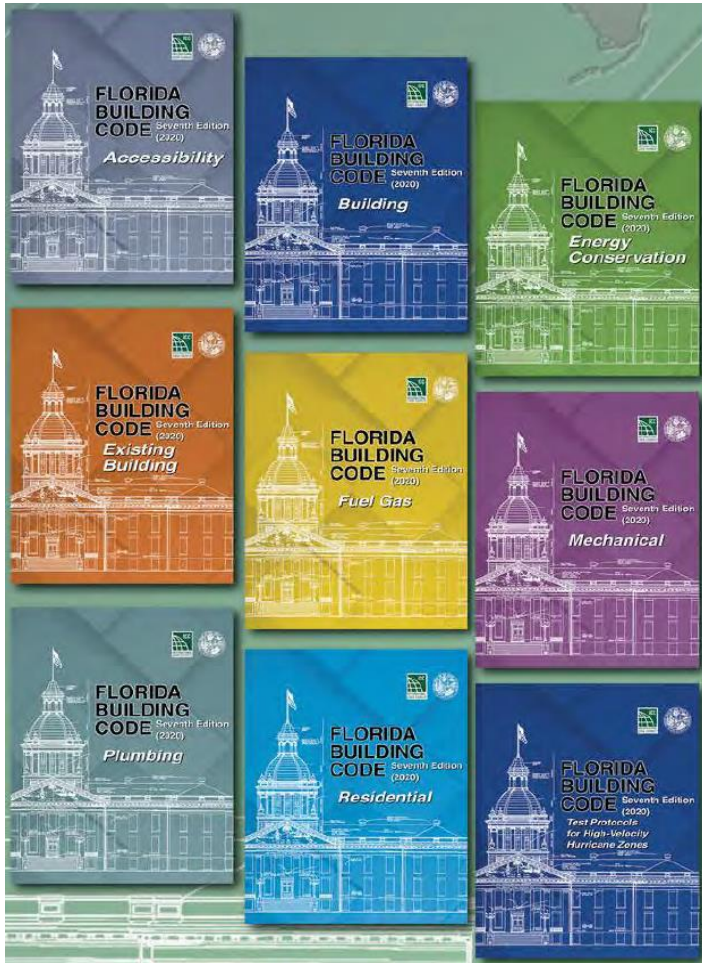
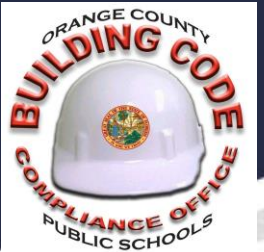
Significant Changes



- 1008.3 requires emergency illumination along path of means of egress to public way only for buildings which have two or more exits

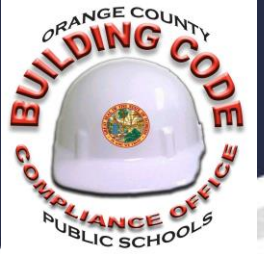


Significant Changes



- New code section for Educational Facilities is 453 (was 423) & 468 (was 443)

Egress Issues



- Courtyards
- Enclosed
- Exterior



Protocol



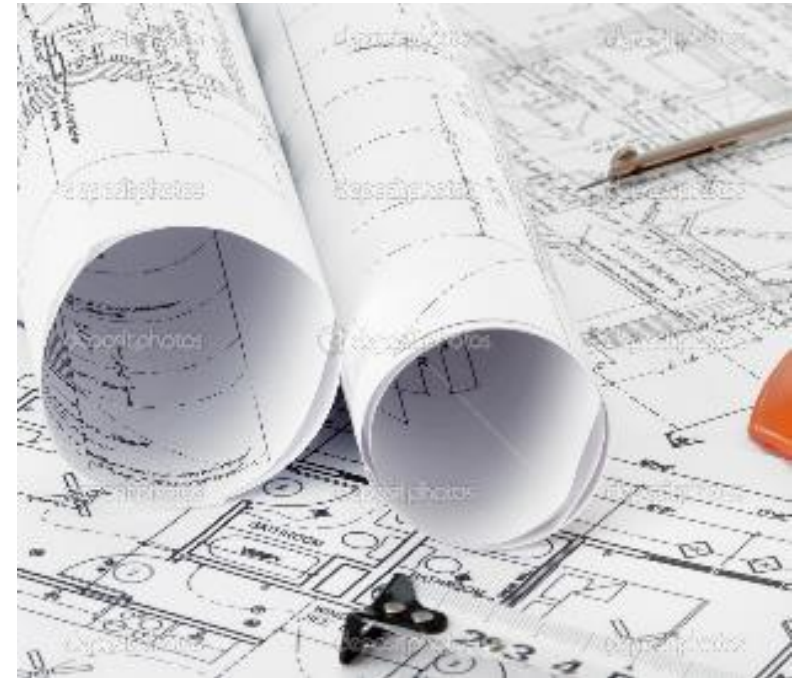
- Procedures for submitting construction documents

...FTP

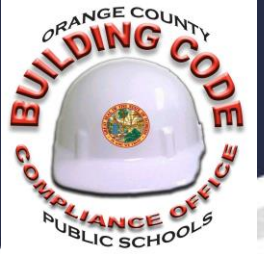
Product Data Submittals, Florida Product Approval, Shop Drawings and Test Reports are no longer to be submitted to the BCCO FTP site.

They are to be reviewed and stamped by you and be available on the job site for the inspector's use.

You will continue to upload ASI's, Bulletin's, PR's and RFI's to the BCCO FTP site for review and approval.

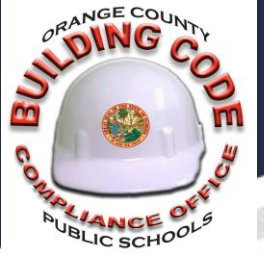


Protocol



- When resubmitting construction change documents (such as RFI's, ASI's, PR's etc.) which were previously rejected, always follow the naming convention as established by the OCPS Design and Construction Department
- Example; RFI 22 was rejected – When corrected and resubmitted it shall be named RFI 22.R1
- If RFI 22.R1 is rejected the corrected response is to be named RFI 22.R2 etc...

Questions



Suggestions
? Questions
problems

